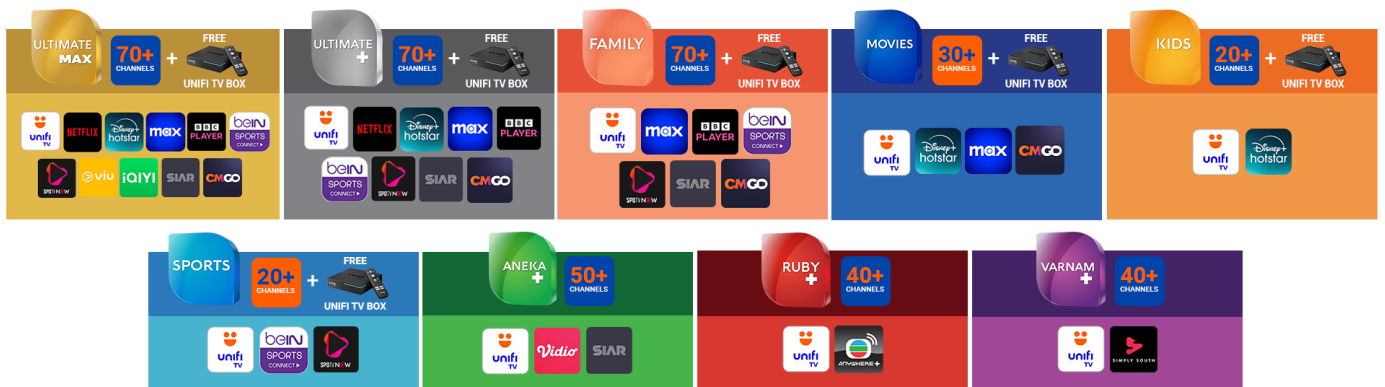
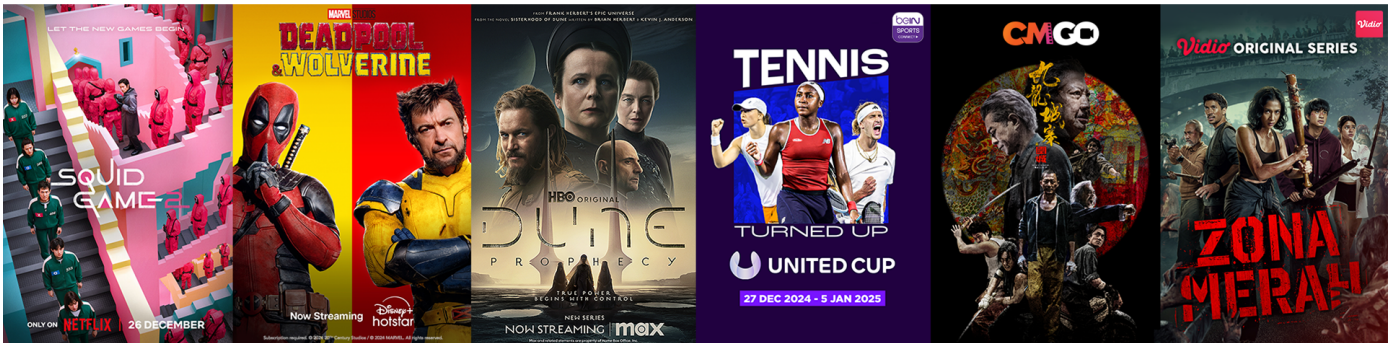




REDEEM ON US!

ACTIVATE YOUR BUNDLED STREAMING APPS



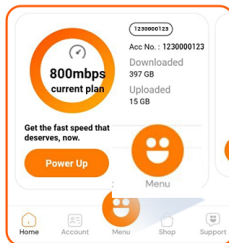
ACTIVATE VIA MYUNIFI APP

Step 1



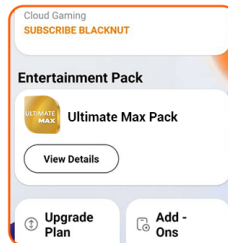
Scan and download MyUnifi app. Log in using your email.

Step 2



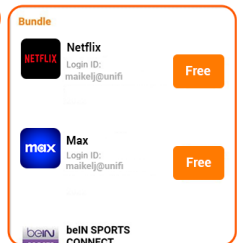
From main page, tap on **Menu** and then **TV Pack**.

Step 3



Select your account, and tap on Entertainment Pack's **View Details**.

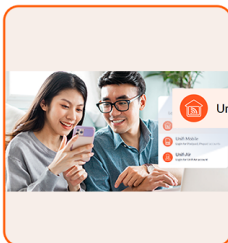
Step 4



Press **Free** button to activate.

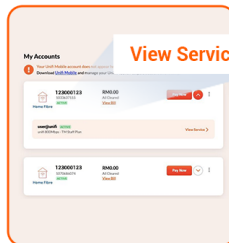
ACTIVATE VIA UNIFI SELF CARE PORTAL

Step 1



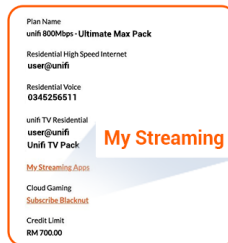
Visit Unifi Selfcare portal (<https://selfcare.unifi.com.my/>) and select **Unifi Home**.

Step 2



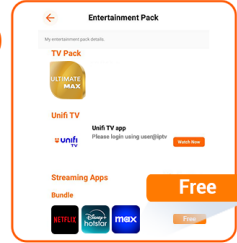
Login with your email. Scroll to **My Accounts** on Home page and select **View Service** of relevant account.

Step 3



Select **My Streaming Apps**.

Step 4



Activate at this page.