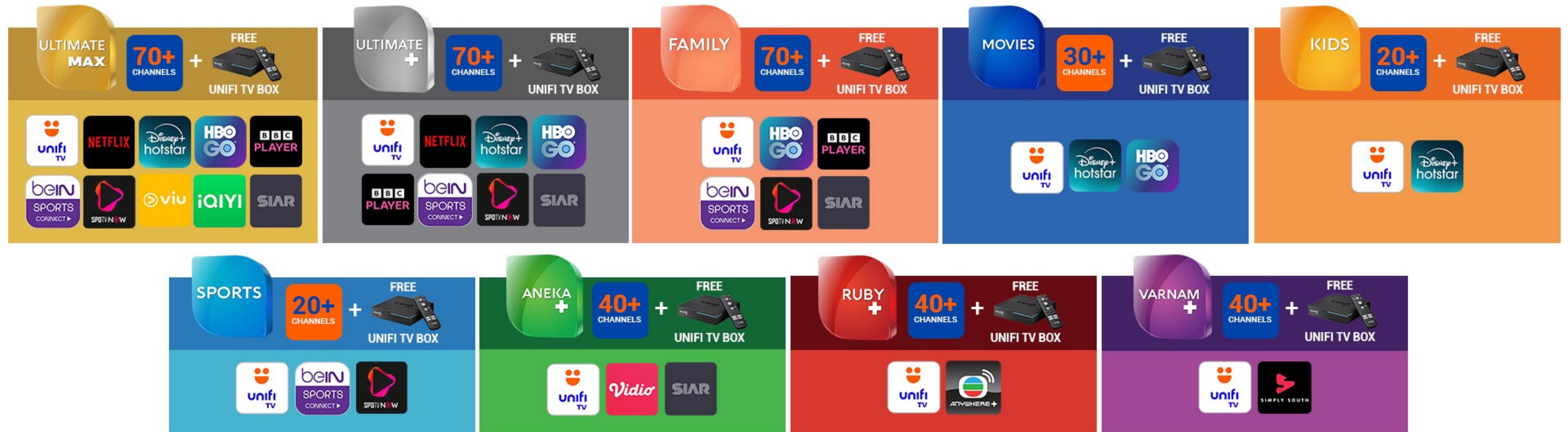
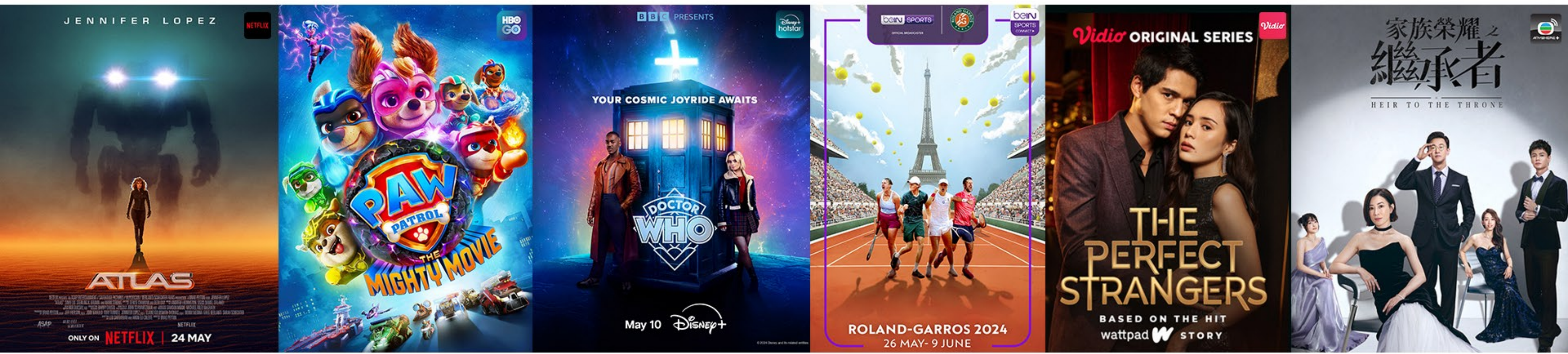


# REDEEM ON US!

## ACTIVATE YOUR BUNDLED STREAMING APPS



## ACTIVATE VIA MYUNIFI APP

Step

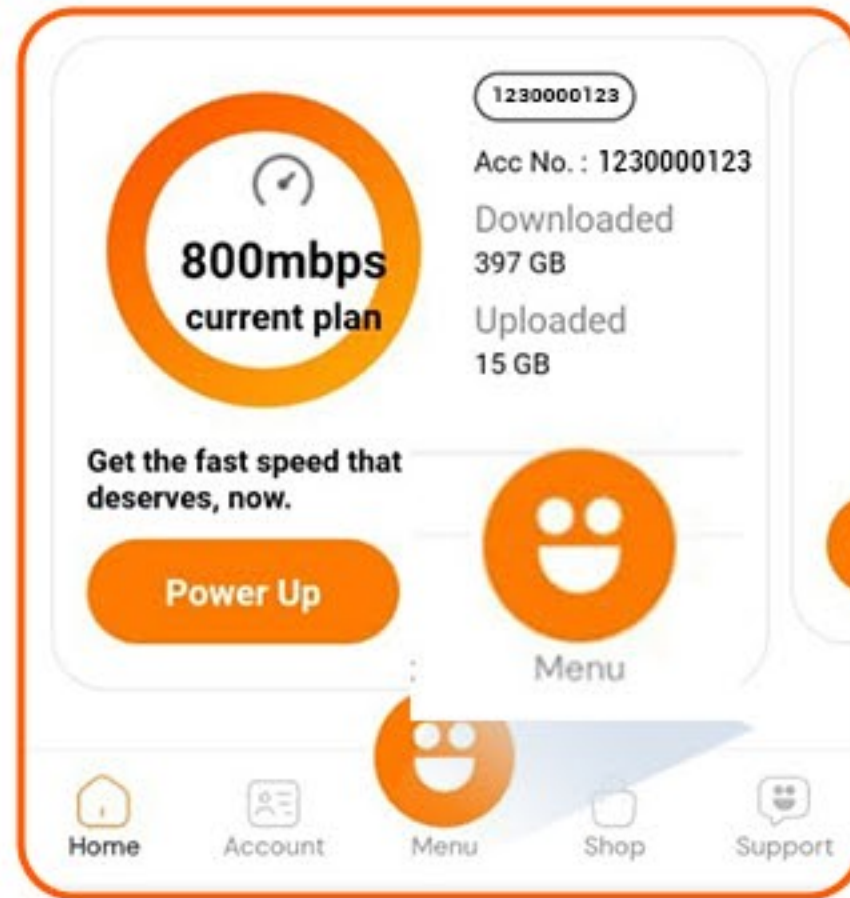
1



Scan and download MyUnifi app. Log in using your email.

Step

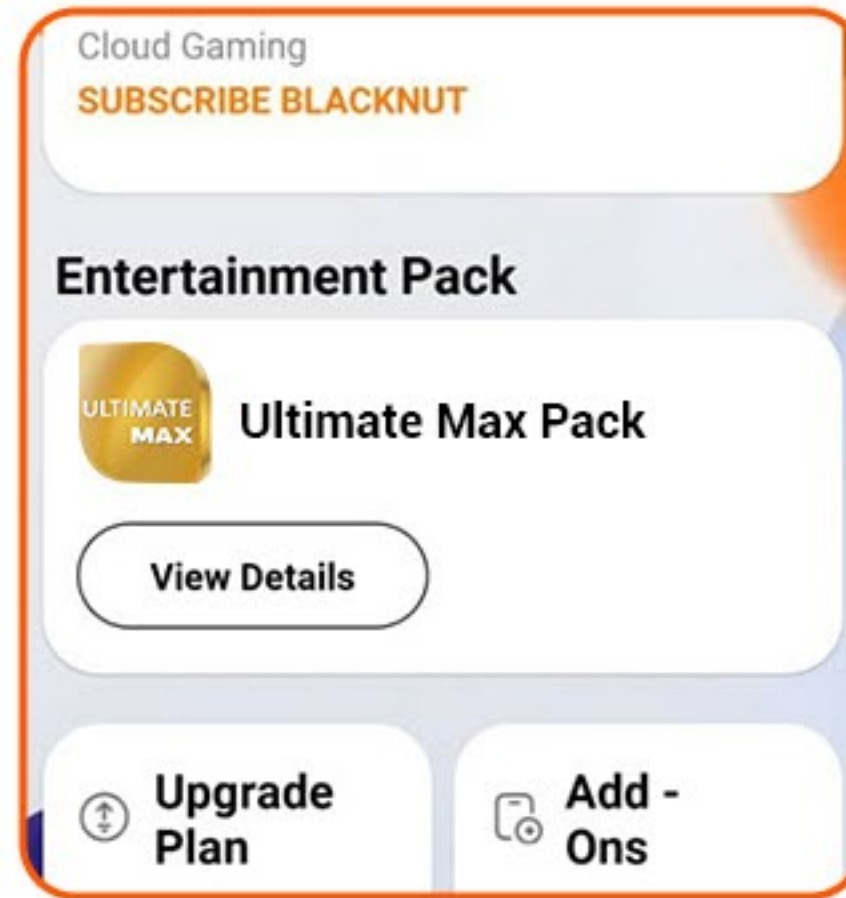
2



From main page, tap on **Menu** and then **TV Pack**.

Step

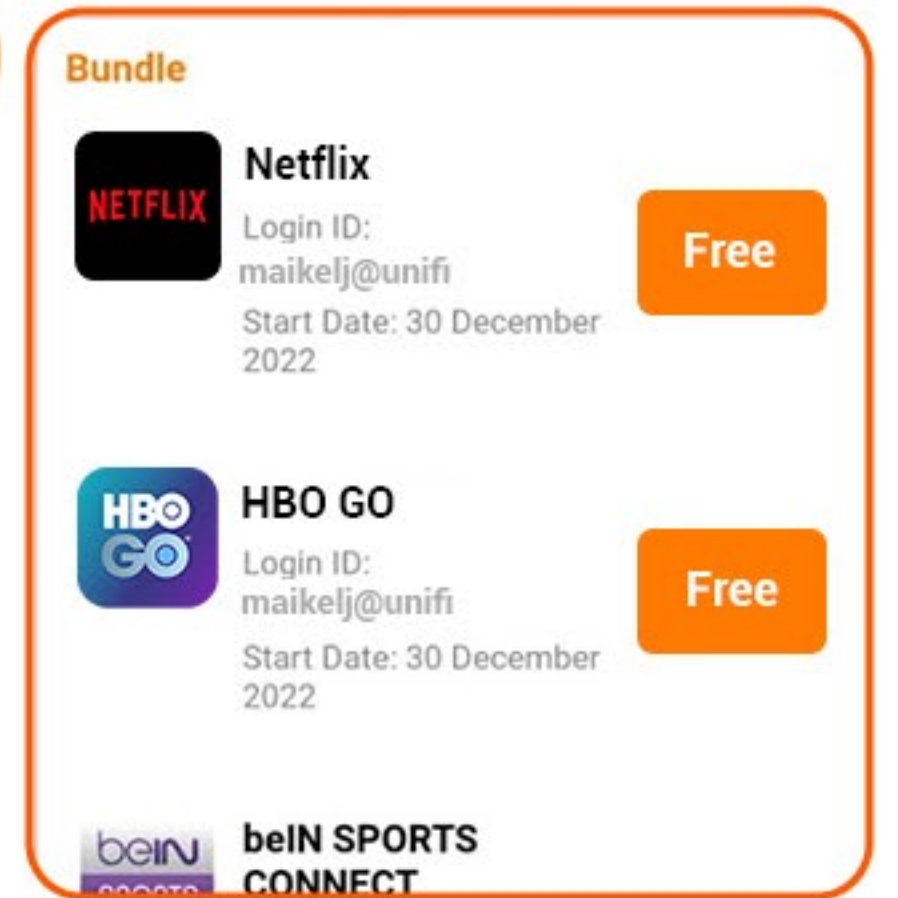
3



Select your account, and tap on Entertainment Pack's **View Details**.

Step

4

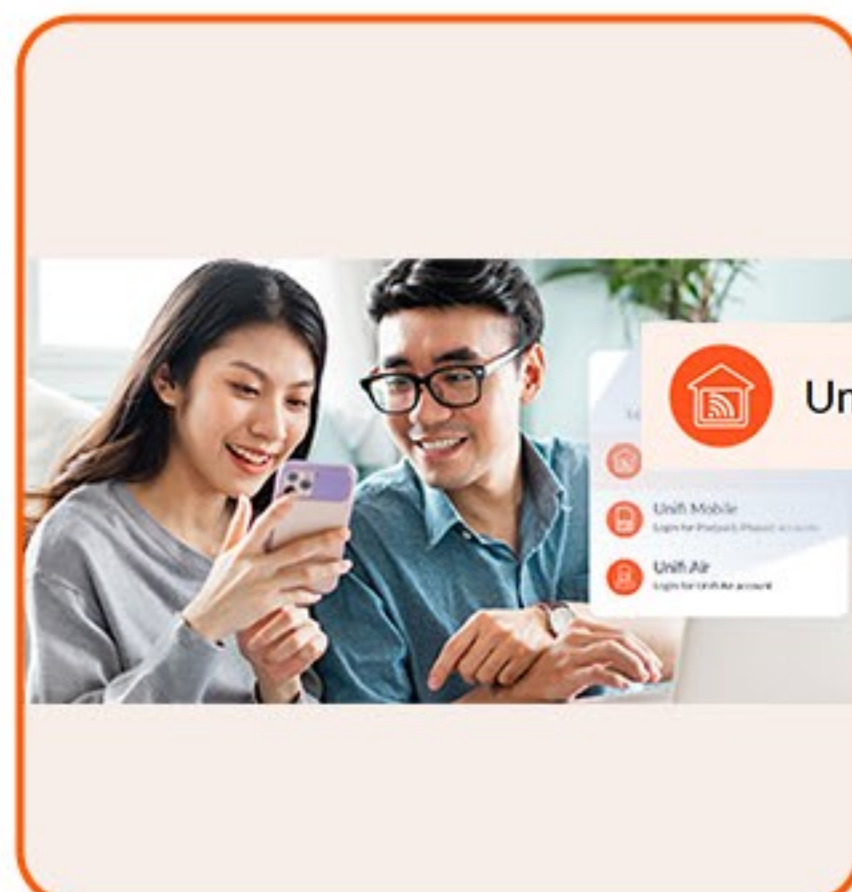


Press **Free** button to activate.

## ACTIVATE VIA UNIFI SELF CARE PORTAL

Step

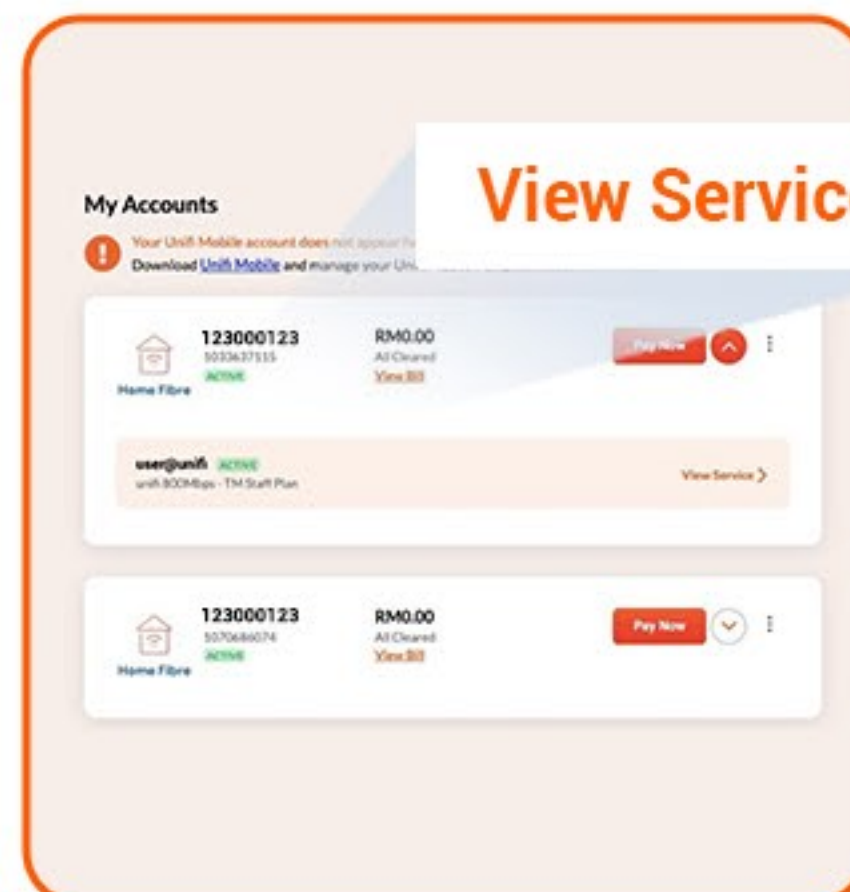
1



Visit Unifi Selfcare portal (<https://selfcare.unifi.com.my/>) and select **Unifi Home**.

Step

2



Login with your email. Scroll to **My Accounts** on Home page and select **View Service** of relevant account.

Step

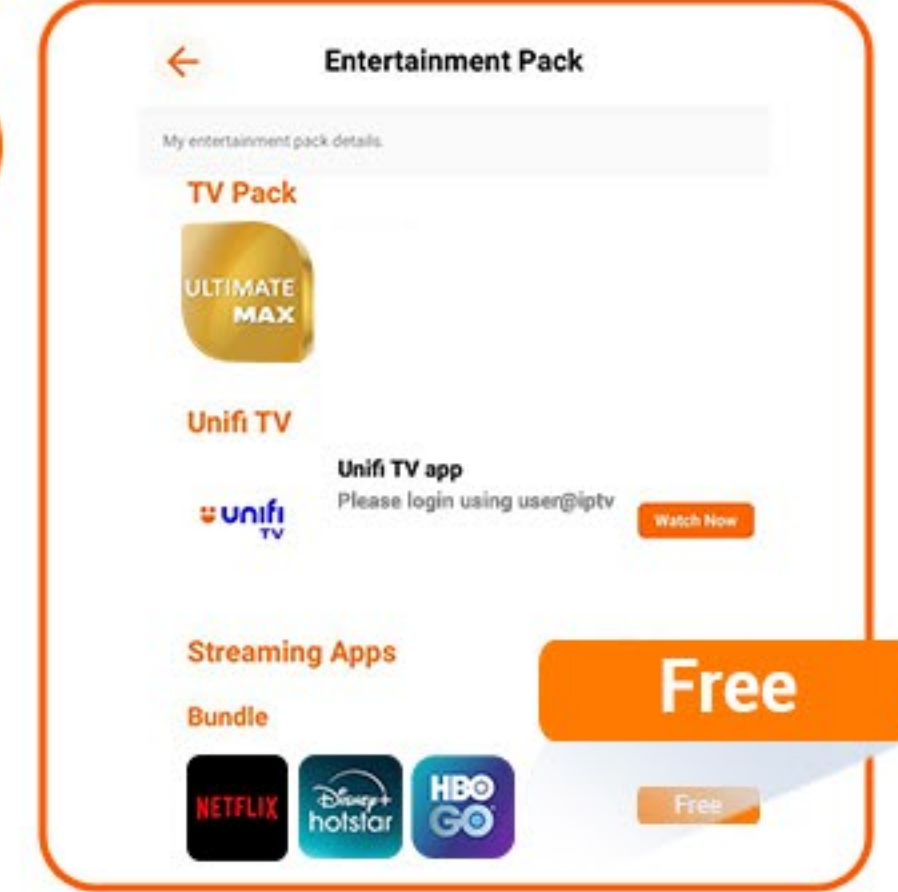
3



Select **My Streaming Apps**.

Step

4



Activate at this page.